

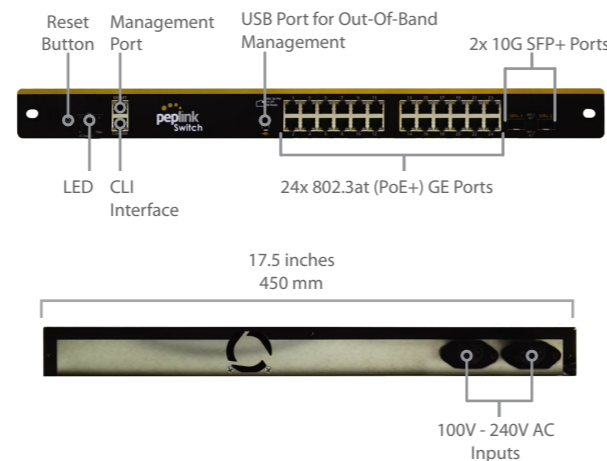
# SD Switch

## New Class of Switch with Cloud Intelligence



### Specifications

SD Switch	
LAN Interface	24x 802.3at (PoE+) GE Ports, 2x 10G SFP+ Ports
VLAN Groups:	Yes
Power Input	2x 100V – 240V Redundant AC Inputs
Power Source	2-3x Redundant PSU
Power Consumption	50W System, 550W or 850W PoE+ Power Budget
Dimensions	1.7 x 19.1 x 15.7 inches 45 x 485 x 400 mm (Height x Width x Depth)
Weight	17.6 pounds 8.0 kg
Operating Temperature	32° – 104°F 0° – 40°C
Humidity	15% – 95% (non-condensing)
Warranty	1-Year Limited Warranty



### Features

#### Networking

Link Aggregation (LACP)  
Spanning Tree Protocol

#### Hardware

PSU Redundancy  
Power Input Redundancy

#### Power Management

Port Scheduling

#### Device Management

Web Administrative Interface  
InControl Cloud Management  
Email Notification  
Syslog Service



### Product Ordering Information

Product Code	Description
PSW-24-850W	Peplink SD Switch, 850W power budget, 3x power supply units, 24x GE Ports (PoE+), 2x 10G SFP+ Ports.
PSW-24-550W	Peplink SD Switch, 550W power budget, 2x power supply units, 24x GE Ports (PoE+), 2x 10G SFP+ Ports.

# SD Switch

## New Class of Switch with Cloud Intelligence



Central Cloud Management  
Instant Network-Wide Troubleshooting  
PoE Port Scheduling



### Expect More from Your Switch

Managing your switches and all connected devices can be a worry-free experience. Yet current switches still cause as many headaches as they solve. Is your switch smart and easy to use enough to address the following problems?

#### No Configuration Transparency

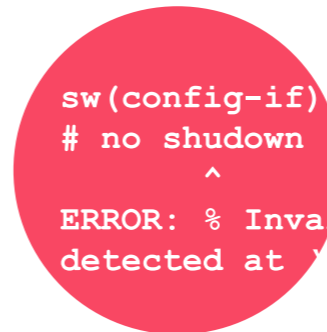
Configuration done through CLI is neither centrally visible nor manageable. This creates unnecessary maintenance downtime.

#### Time-Consuming Troubleshooting

If an improperly connected device is causing network problems, tracing the problems and finding the culprit becomes frustrating.

#### Need to Supply Reliable Power

If a switch's power supply fails for any reason, all connected devices become inoperable, bringing business to a halt.



### Solution: Peplink SD Switch

#### Modern Cloud-Based Management

View the status of every SD Switch on a single interface. Push configurations to device groups and remotely schedule PoE port operation.

#### Tools to Quickly Find the Culprit

Use our cloud-based management tool to see all devices in your network. Search by MAC address and pinpoint the culprit's exact port.

#### Unbreakable Power

The SD Switch is equipped with dual AC power inputs and up to 3x PSU to ensure that it will keep running no matter what.



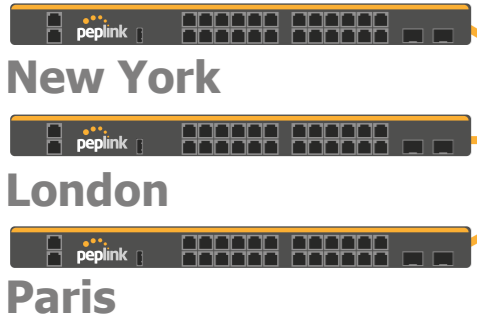
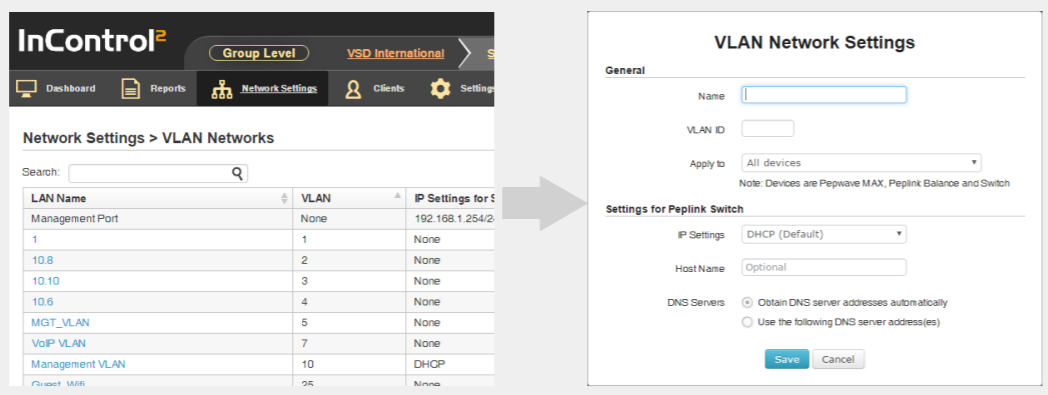
sales@peplink.com

www.peplink.com

©Peplink. All rights reserved. Peplink, the Peplink logo, and SpeedFusion are trademarks of Peplink International Ltd. Other brands and product names are trademarks or registered trademarks of their respective holders. All specifications are subject to change without notice.

# Network-Wide VLAN Configuration

Simplify management and cut down maintenance time by unifying your VLAN management across your SD Switches and other Peplink devices.



**InControl<sup>2</sup>**  
Cloud Management

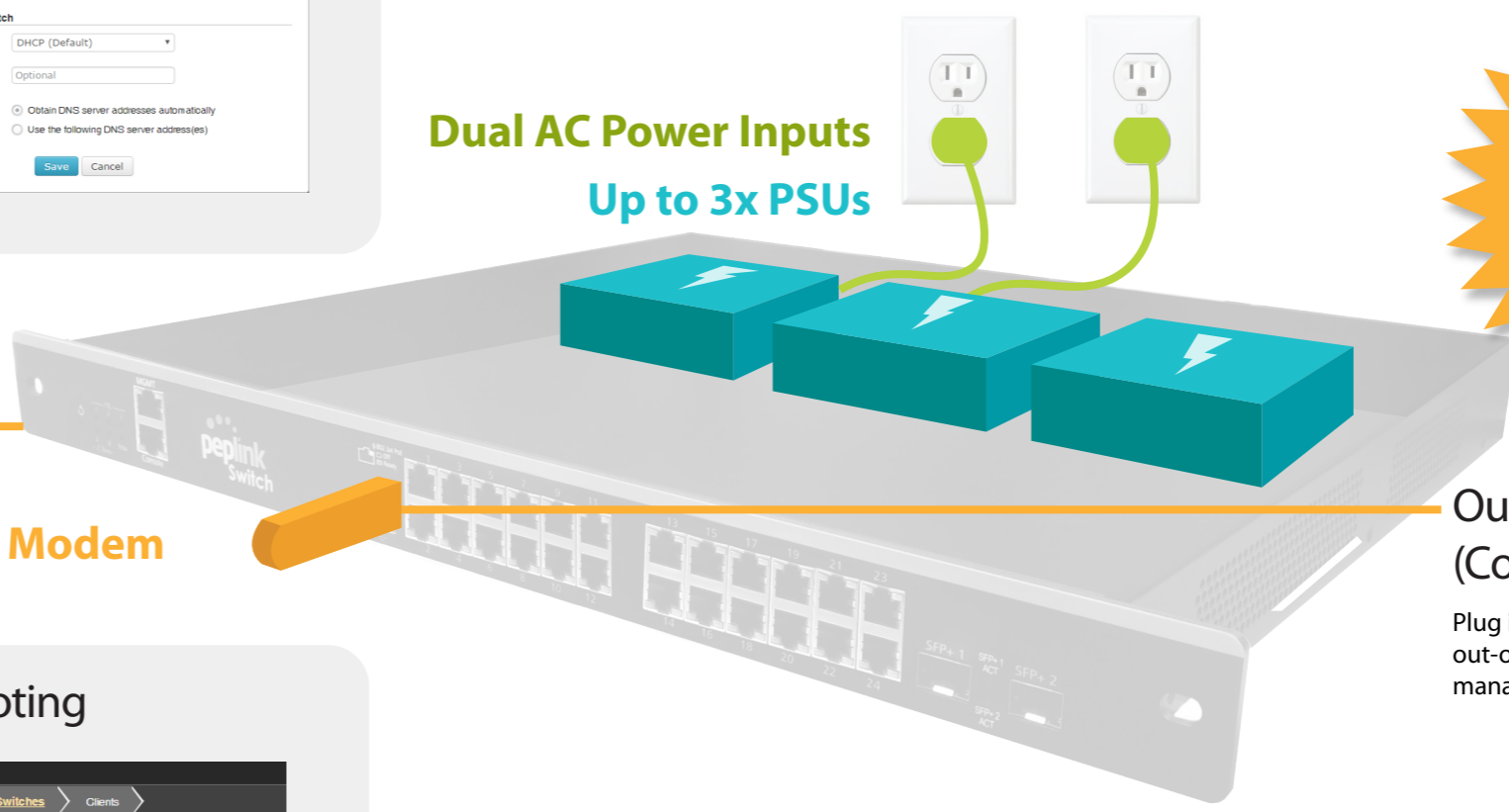
**USB Modem**

# Unbreakable Power via Multiple Redundancies

The SD Switch is built with dual AC power inputs, enabling you to connect it to two independent power sources. Even if one source accidentally loses its connection, the SD Switch will keep on running.

The SD Switch is also built with up to three power supplies. By balancing the load between them, they have a longer life expectancy. Even if a power supply goes down, the SD Switch will still keep on running.

**Dual AC Power Inputs**  
**Up to 3x PSUs**



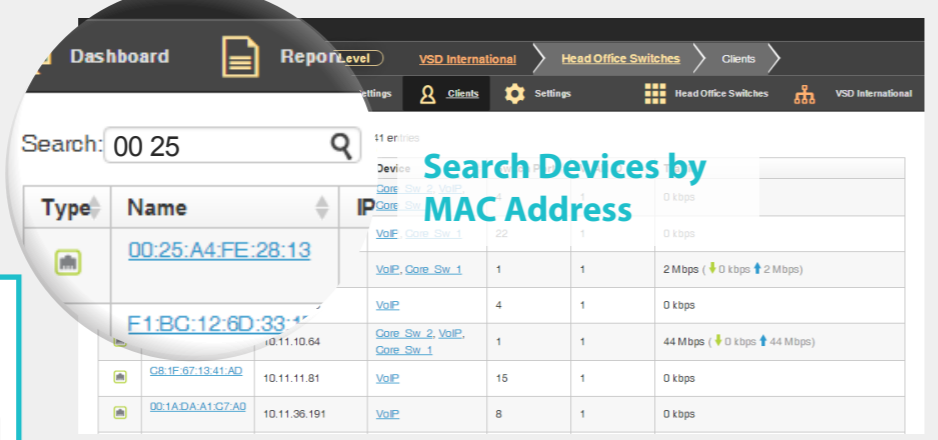
**Industry Leading Power Budget**  
**850W**  
Within 1U

**Out-Of-Band Management (Coming Soon)**

Plug in a USB modem to enable secure out-of-band management using our cloud management tool.

# Port Management, Instant Network-Wide Troubleshooting

Search for any device across all your SD Switches, and quickly find out which devices are causing problems.



## Remotely Configure Ports

Ports: 3, 5, 7, 9, 11

Enable:

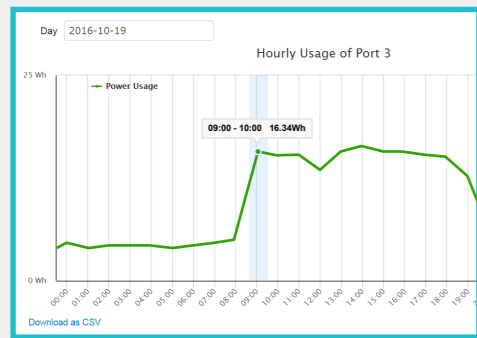
PoE Enable:

Speed: Auto

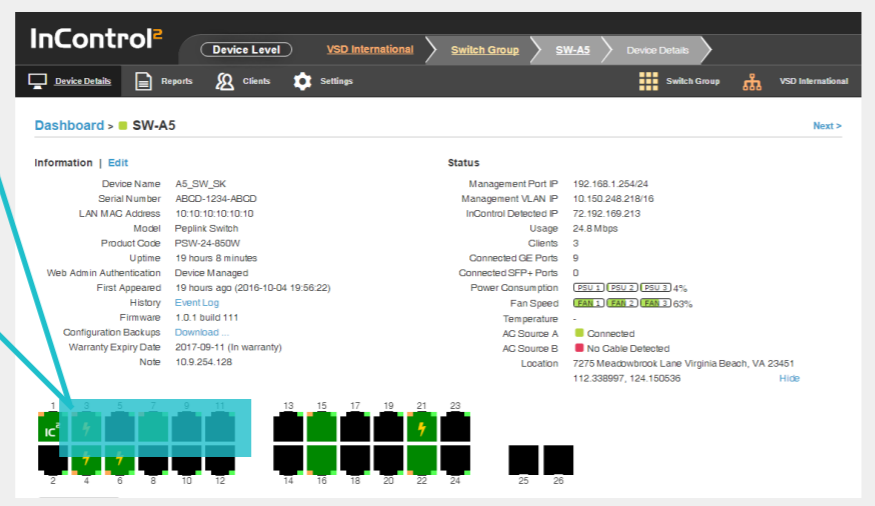
Port Type:  Trunk  Access

Networks: Marketing (VLAN 3)

RSTP:



**Check Power Consumption History**



**Select Multiple Ports to ...**

# Save Power with PoE Port Scheduling (Coming Soon)

Cut down your power bill by using our flexible group-based management functionality. Set up schedules for different device types and groups. For example, you can set up some lights to turn on only during working hours.

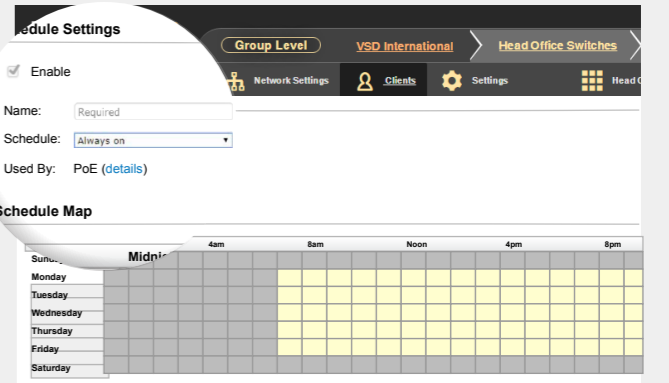
**Schedule Overview**

Name	Time	Used By
IP Camera Group 1	Weekdays Only	Group 1, Group 2, Group 3, Floor 1, Floor 2, Floor 3
IP Camera Group 2	8am to 5pm on Weekdays Only	Group 1, Group 2, Group 3, Floor 1, Floor 2, Floor 3
IP Phones	Custom	Floor 1, Floor 2, Floor 3

Devices	Ports
Floor 1 Room 2	1, 10, 13
Floor 1 Room 4	3, 5, 6
Floor 1 Room 6	1, 3, 5, 18, 19
Floor 2 Room 1	7, 8, 16, 21
Floor 2 Room 5	2, 12, 17, 21, 23

**See All Affected Ports**

**Schedule Configuration**



*Functionality in Progress, Final UI May Differ.*